

FROM: Steve Scherer, Tony Hernandez  
RE: Details regarding our contest on September 29, 2012

Plans for the Twenty-second Annual Maple Leaf Classic have been completed and we are very excited about our show. We are extremely pleased that your band will be a part of our contest. We've gone to great lengths to make this the most educational experience possible. We feel that every band will leave Geneseo better than when they arrived.

Please read the enclosed information very carefully and feel free to call or e-mail regarding anything of which you are not sure. (Steve: 309/945-0321; Tony: 309/945-0320)

#### DIRECTIONS TO GENESEO HIGH SCHOOL

Geneseo is located 20 miles east of Moline and Rock Island on Interstate 80 at exit #19. The school is on the north side of town at 700 North State Street.

#### CRITIQUE SESSIONS

After each band's performance, they will be receiving a critique from one of the adjudicators. The critique rooms are the auditorium and cafeteria located at the high school.

#### DIRECTORS HOSPITALITY

Participating directors and their instructors are invited to enjoy a delicious meal and snacks at no cost between 3:00 and 6:00. This meal will be provided by the Geneseo Performing Arts Council. It will be located in the high school library. Please join us!

#### FOOD

Our concession stand located at the stadium will be open all evening for everyone. Students, directors, and chaperones may enter the stadium at their convenience by showing their stamped hand or wristband at one of the pass gates. The concessions are one area where we can help pay for judges and clinicians. We have one of the best show concessions in Illinois, especially our pork chops & funnel cakes! With a large variety of selections, your students will be very satisfied. This is a fundraiser for GHS so please have your students eat with us!

#### STADIUM ADMISSION

All directors and staff will be admitted free through our pass gate by showing their wristband. Band members will be admitted by showing their hand stamps (done as they exit their buses). Prices for others attending are:

Adults	\$7.00
Students	\$3.00

#### STUDENT ADMISSION FOR PERFORMERS

Because of the wonderful turn out of 21 competing bands, student performers are required to use the bleachers on the visitors side. The front bleachers will be reserved for the ticket paying audience members. Your assistance in informing the student of the request would be appreciated.

### SPECIAL ACTIVITIES

DVD's of the entire show can be ordered for \$15. A form is included which you can copy and hand out to anyone who wishes to order one. This can be turned in at the table, along with payment, at the show.

AIR GRAMS can be purchased for \$1 each, to be read by the announcer while each band is entering or exiting the performance field. There will be a limit to the number of air grams read prior to each band's introduction.

### WARM-UP FIELD

Each band will have 30 minutes to warm up before the competition. We expect all bands to watch their time closely on the warm-up field. There will be a timer to tell you when you have THREE minutes left. Penalties will be given for exceeding your time on this field.

PERFORMANCE SCHEDULES MUST BE MET.

Please check the enclosed schedule for warm-up and performance times. There will be a guide to meet you at your buses approximately 15 minutes prior to your warm-up time. They will direct you to all areas for your warm up, performance, and back to your buses. Please note that no vehicles are allowed onto the track or stadium field, so you will need manual help to move your equipment to the "pit" area from the track gate. Also, NO EQUIPMENT TRUCKS WILL BE ALLOWED TO DRIVE INTO THE STADIUM AREA. Equipment trucks will remain with buses.

Make sure you are off the field in your allotted time to avoid timing penalties. Remember: entry and exit from the stadium are through the same gate. This gate is located on the northwest corner of the stadium. Judges will be on the west side. You may exit the field after your performance from either the front sideline or the south end zone.

### RAIN PLAN !!!

Just in case Mother Nature doesn't let us do our show outdoors, we do have contingency plans in case of rain. In the event we get sufficient precipitation, we won't make a decision before 1:00 about the field show. If the rain keeps us from doing the field show as planned, we will do a competition indoors instead with music and auxiliary visual being judged. Meet in the Commons (inside the back doors of the school across from the stadium concession stand) at 2:00 to get directions for the indoor show in case of rain.

### AWARDS PRESENTATION

At approximately 8:00 PM, an awards presentation will be held on the football field, with each band represented by their drum majors. Trophies will be presented for 1<sup>st</sup>, 2<sup>nd</sup>, and 3<sup>rd</sup> place in each class as well as caption awards for Best Winds, Color Guard, Percussion and Drum Majors in each class. There will also be a Grand Champion trophy presented to the band with the most points overall, regardless of class.

### FIELD SHOW PARKING

ALL buses and equipment vehicles will park in the lots located by the middle school. Pit equipment can be moved by your pull-carts or your tractor-driven carts using the same pedestrian route as the bands to the stadium. General parking is available on the streets surrounding the school, and in the main parking lot west of the school.

### HAND STAMPING

In order for your students to get into activities at the stadium free of charge, they must get their hands stamped. This will be done as your students exit the buses. Staff, chaperones, bus drivers should receive a wristband from the director (these are given to the director as your bus stops at the barricade). Each band receives a wristband for every 8 students. You will not receive any extra ones. Plan accordingly. Make sure bus drivers receive a wristband. Everyone from your group must have a wristband, hand stamp, or ticket to get in.

### COMPETITION CLASSIFICATION AND JUDGING PANEL

A	up to 60 members
AA	61 to 100 members
AAA	101 to 140 members
AAAA	141 or more members

Our competition will utilize the adjudication sheets of the Florida Marching Band Coalition. Our panel of judges will include:

***Critique rotation:*** Gary Smith, Mike Fansler, Kevin McNulty

***Music:*** Bernie Potter, Jim Haskell, Doug Fletcher

***Visual:*** Brandon Spidel, Amy Fletcher, Brandon Spidel

***Winds:*** Dave Maccabee

***Percussion:*** Genaro Cantu

***Color Guard:*** Eric Ashcraft

***Drum Major:*** Victor Bianchetta

GENESEO HIGH SCHOOL  
 MAPLE LEAF CLASSIC  
 SATURDAY, SEPTEMBER 24, 2011

Band	Class	Guide	Warmup	Performance	Critique	Location
GMS Band						
Rockridge	A	2:12 p.m.	2:30 p.m.	3:12 p.m.	3:24 p.m.	Cafeteria
Galva	A	2:24 p.m.	2:42 p.m.	3:24 p.m.	3:36 p.m.	Auditorium
Kewanee	A	2:36 p.m.	2:54 p.m.	3:36 p.m.	3:48 p.m.	Cafeteria
Wethersfield	A	2:48 p.m.	3:06 p.m.	3:48 p.m.	4:00 p.m.	Auditorium
Cambridge	A	3:00 p.m.	3:18 p.m.	4:00 p.m.	4:12 p.m.	Cafeteria
Oregon	A	3:12 p.m.	3:30 p.m.	4:12 p.m.	4:24 p.m.	Auditorium
<b>BREAK</b>						
Davenport N	AA	3:36 p.m.	3:54 p.m.	4:36 p.m.	4:48 p.m.	Cafeteria
ROWVA	AA	3:48 p.m.	4:06 p.m.	4:48 p.m.	5:00 p.m.	Auditorium
Rochelle	AA	4:00 p.m.	4:18 p.m.	5:00 p.m.	5:12 p.m.	Cafeteria
Lasalle-Peru	AA	4:12 p.m.	4:30 p.m.	5:12 p.m.	5:24 p.m.	Auditorium
<u>Streator</u>	AA	4:24 p.m.	4:42 p.m.	5:24 p.m.	5:36 p.m.	Cafeteria
Metamora	AA	4:36 p.m.	4:54 p.m.	5:36 p.m.	5:48 p.m.	Auditorium
East Peoria	AA	4:48 p.m.	5:06 p.m.	5:48 p.m.	6:00 p.m.	Cafeteria
Pekin	AA	5:00 p.m.	5:18 p.m.	6:00 p.m.	6:12 p.m.	Auditorium
<b>BREAK</b>						
Dunlap	AAA	5:24 p.m.	5:42 p.m.	6:24 p.m.	6:36 p.m.	Cafeteria
McHenry	AAA	5:36 p.m.	5:54 p.m.	6:36 p.m.	6:48 p.m.	Auditorium
Oak Park/River	AAA	5:48 p.m.	6:06 p.m.	6:48 p.m.	7:00 p.m.	Cafeteria
Galesburg	AAA	6:00 p.m.	6:18 p.m.	7:00 p.m.	7:12 p.m.	Auditorium
IVC	AAA	6:12 p.m.	6:30 p.m.	7:12 p.m.	7:24 p.m.	Cafeteria
Minooka	AAAA	6:24 p.m.	6:42 p.m.	7:24 p.m.	7:36 p.m.	Auditorium
Washington	AAAA	6:36 p.m.	6:54 p.m.	7:36 p.m.	7:48 p.m.	Cafeteria
Geneseo	EXH	6:48 p.m.	7:06 p.m.	7:48 p.m.	8:00 p.m.	Auditorium
<b>AWARDS</b>				8:00 p.m.		

## MAPLE LEAF MARCHING CLASSIC DVD ORDER FORM

Please complete the order form below to order a DVD of all the bands. You must prepay with your order. Make checks payable to Mowers Photography. The DVD will be mailed to you as quickly as possible. Thank you for supporting the performing arts program.

PLEASE PRINT NEATLY

Name\_\_\_\_\_

Address\_\_\_\_\_

\_\_\_\_\_

Phone\_\_\_\_\_

Band (if need to contact)\_\_\_\_\_

Money enclosed (\$15 per DVD)\_\_\_\_\_

Order form and money may be mailed to: Mowers Photography  
728 Cardinal Court  
Geneseo, Illinois 61254

## MAPLE LEAF MARCHING CLASSIC DVD ORDER FORM

Please complete the order form below to order a DVD of all the bands. You must prepay with your order. Make checks payable to Mowers Photography. The DVD will be mailed to you as quickly as possible. Thank you for supporting the performing arts program.

PLEASE PRINT NEATLY

Name\_\_\_\_\_

Address\_\_\_\_\_

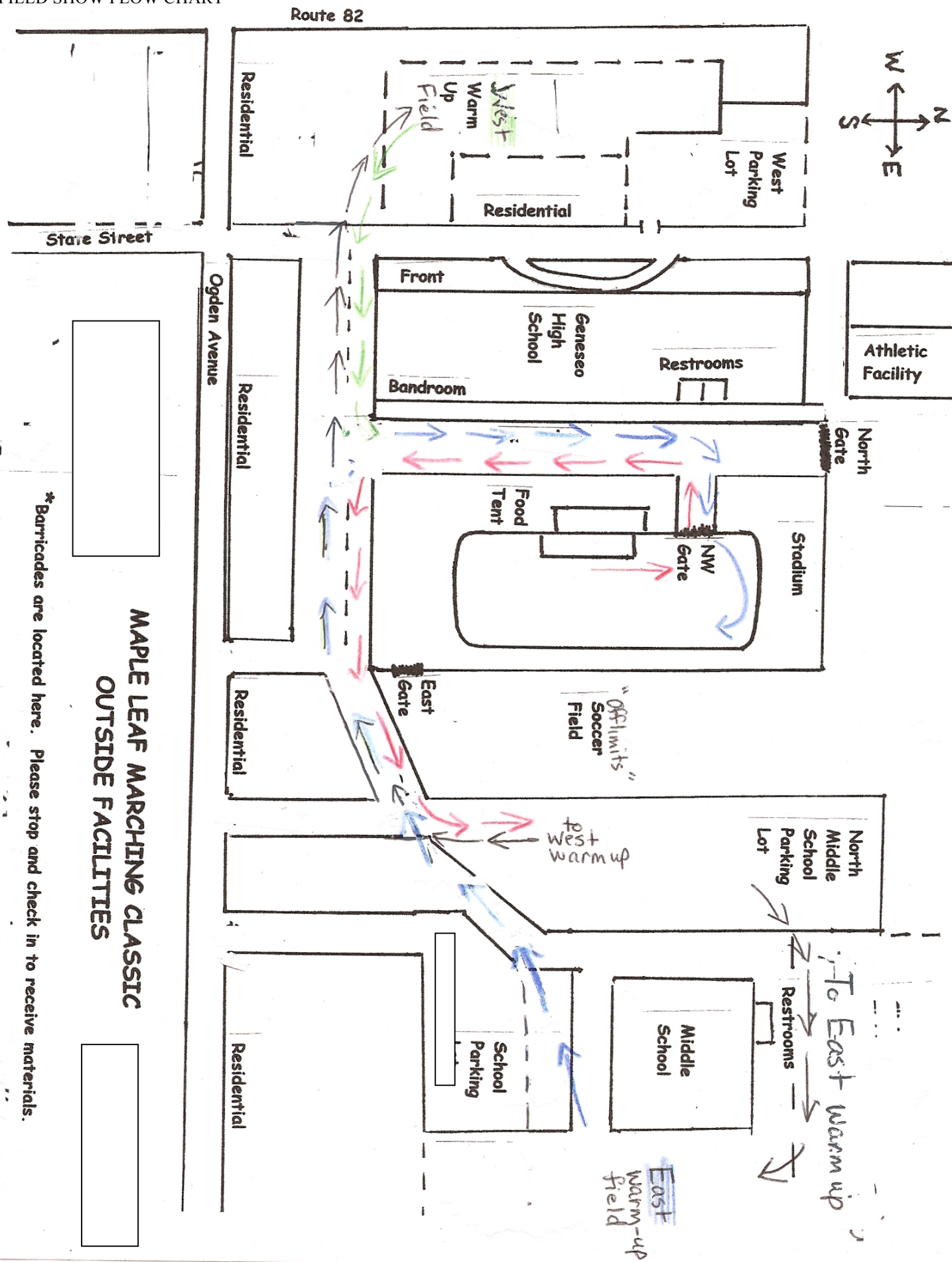
\_\_\_\_\_

Phone\_\_\_\_\_

Band(if need to contact)\_\_\_\_\_

Money enclosed (\$15 per DVD)\_\_\_\_\_

Order form and money may be mailed to: Mowers Photography  
728 Cardinal Court  
Geneseo, Illinois 61254



# MAPLE LEAF MARCHING CLASSIC OUTSIDE FACILITIES

\*Barricades are located here. Please stop and check in to receive materials.